

Palo Verde High School Bell Schedule 2016-2017

LUNCHES ARE DETERMINED BY YOUR 5th AND 6th PERIOD CLASSES.

**FIRST LUNCH: BUSINESS, ENGLISH, FOREIGN LANGUAGE,
SOCIAL STUDIES, PRACTICAL ARTS,**

**SECOND LUNCH: FINE ARTS, HEALTH, MATH, PHYSICAL EDUCATION,
ROTC, SCIENCE, SPECIAL EDUCATION,**

First Lunch			
	A Day	B Day	
Period	1	2	8:00 - 9:23
Period	3	4	9:28 - 10:51
Lunch			10:56 - 11:21
Period	5	6	11:26 - 12:49
Period	7	8	12:54 - 2:16

Second Lunch			
	A Day	B Day	
Period	1	2	8:00 - 9:23
Period	3	4	9:28 - 10:51
Period	5	6	10:56 -12:19
Lunch			12:19 -12:49
Period	7	8	12:54 - 2:16

Class Schedule

Period	Class	Teacher	Rm. #
1			
2			
3			
4			
5			
6			
7			
8			

Assembly Schedule

First Lunch				Second Lunch			
	A Day	B Day			A Day	B Day	
Period	1	2	8:00 - 9:11	Period	1	2	8:00 - 9:11
Period	3	4	9:16 - 10:27	Period	3	4	9:16 - 10:27
Lunch			10:27 - 10:57	Lunch	5	6	10:32 - 11:43
Period	5	6	11:02 - 12:13	Lunch			11:43 - 12:13
Period	7	8	12:18 - 1:29	Period	7	8	12:18 - 1:29
ASSEMBLY			1:29 - 2:16	ASSEMBLY			1:29 - 2:16

SCHOOL MISSION

THE MISSION OF PALO VERDE HIGH SCHOOL IS TO PREPARE STUDENTS TO REALIZE THEIR ACADEMIC, CREATIVE, EMOTIONAL, PHYSICAL, SOCIAL, AND CAREER POTENTIALS AS CONTRIBUTING MEMBERS OF SOCIETY IN A COMMUNITY OF MUTUAL RESPECT.

SCHOOL COLORS AND MASCOT

PALO VERDE'S SCHOOL COLORS ARE BLACK, SILVER, AND GREEN. THE MASCOT IS A PANTHER.



**WELCOME TO
PALO VERDE HIGH SCHOOL**

The administration and staff of Palo Verde High School welcomes you to the 2016-2017 school year. We know it will be an exciting and rewarding challenge. This handbook has been produced to help you plan your daily schedule and familiarize yourself with Palo Verde High School. This handbook needs to be with you in each class at Palo Verde. You must also take it with you as a pass when needed. Replacement cost for a new handbook is \$7 per book. Please refer to the school website (paloverde.org) for up to date information on school policies and regulations. Have a great year!

Palo Verde High School Administration – 799-1450

Principal Darren Sweikert	x 4100
Asst. Principal David Pearce	x4203
Asst. Principal Jeffery Dalton	x 4201
Asst. Principal Ana Crosby	x 4205
Asst. Principal Jessica Lovell	x 4207

Palo Verde Phone Extensions 799-1450

Receptionist 4000	Main Office 4100
Deans' Office 4500	Attendance 4035
Counselors 4300	Registrar 4065
School Police 4700	Athletics 4200
Curriculum & Testing 4202	Activities 4205

Parent Advisory Council Meetings

Parent Advisory Council meetings are scheduled monthly to inform parents about school activities, and provide a forum for parents to discuss issues.

Friday, September 25th at 9:00 am
Thursday, October 29th at 9:00 am
Friday, December 4th at 9:00 am
Friday, January 29th at 9:00 am
Friday, February 26th at 9:00 am
Friday, April 1st at 9:00 am
Friday, April 29th at 9:00 am

GOALS AND OUTCOMES FOR STUDENT LEARNING



By the end of their senior year, Palo Verde High School students will have:

THINKING SKILLS

- * Choose and apply analytical, problem-solving, and learning strategies, appropriate to a task.

EXPANDING AND INTEGRATING KNOWLEDGE

- * Acquire and demonstrate knowledge and skills that will enable students to be functional and productive citizens in an ever-changing environment.
- * Apply technology as a tool to accomplish a task or goal.
- * Demonstrate the ability to investigate and retrieve information and ideas using all available resources.
- * Prepare for the pursuit of a career in the twenty-first century.

COMMUNICATION SKILLS

- * Communicate effectively through written, numeric, aural, and visual communications.
- * Understand, evaluate, and interpret; written, numeric, auditory, and visual communications.
- * Express themselves creatively and appreciate creative expression in others.

PERSONAL AND SOCIAL RESPONSIBILITY

- * Graduate having completed courses that meet and challenge their abilities.
- * Participate in activities that promote social, physical, and mental well being.
- * Demonstrate the ability to work collaboratively with others.
- * Practice civic and personal responsibility in a culturally diverse world.

STATEMENT OF NONDISCRIMINATION

In compliance with Title VI of the Civil Rights Act, Title IX of the Education Amendments of 1971, Section 504 of the Rehabilitation Act of 1975, the Clark County School District will not knowingly discriminate against any person on the basis of race, creed, color, national or ethnic origin, sex, handicap, or age in admission or access to, or treatment or employment in, or participation in its programs and activities. The Title IX administrator is Mr. Keairnes.

ACADEMICS

Student Handbook

This handbook needs to be with you in each class here at Palo Verde. You must also take it with you as a pass when needed. It is an important resource for you. Replacement cost for a new handbook is \$7 per book, while supplies last.

Textbooks

Textbooks are provided to students by the school district free of charge. All library and textbooks, however, remain the property of the school. Students will be charged for lost, stolen, or damaged books. Any lost or stolen book must be paid for before another book is issued. *If you turn in your textbook to someone other than the teacher who gave it to you, make sure to get a receipt.*

ATTENDANCE

Attendance The attendance policy adopted by the Clark County School District Board of Trustees, CCSD Regulation 5113, states that secondary students who exceed **seven (7) unapproved** absences in any course during a semester will not earn credit for that course. The student may be retained in the semester and will not earn credit for that course. The student may be retained in the current grade or be referred to an alternative education program.

It is the policy of Palo Verde High School to 1) encourage maximum attendance on the part of students and 2) require absent students to explain their absences.

Palo Verde High School will apply the seven unapproved absences limitation to all classes. Credit will be denied on the 8th unapproved absence (those designated for attendance enforcement purposes) in each class. Changes made by CCSD supersede the PVHS handbook.

Approved Absences

- * A student is physically or mentally unable to attend school due to a medical appointment or illness.
- * The written approval of the principal has been given upon the request of the parent within three (3) days of the student's return from the absence.
- * The approval of the principal has been given for an unavoidable absence due to an emergency;
- * Absences have been prearranged, upon the prior written request of a parent or legal guardian; all prearranged absences (seven or fewer) will be approved.
- * The student is absent due to a required court appearance or a required religious holiday.

Unapproved Absences

- * Not approved in writing in advance.
- * Not due to the physical or mental inability of the student to attend school.
- * Parent/guardian failed to notify the school of student's inability to attend school within three days of the occurrence.

Pre-arranged Absences

- * Must be requested in advance and in writing.
- * Forms are available in the attendance office.

* After seven prearranged absences, the absences will be counted as un-approved and will count toward loss of credit.

Absence Notes

For an absence to be approved, students must bring a note to the attendance office within three (3) days of the last absence. This note must contain:

- full name of the student
- student's grade and student number
- date(s) of the absence
- reason for absence (i.e., flu, measles)
- full name of the parent/guardian (printed and signed)
- telephone number of parent/guardian

Loss of Credit Appeals

If a student has exceeded seven (7) unapproved absences in a class during a semester, that student will lose credit in that class. Parents have three days after receipt of the loss of credit letter to request an appeal if they believe there is an error in the attendance record or that an extenuating circumstance exists. Appeals can be scheduled with the assistant principal, by calling 799-1450 ext. 4206.

Questions about an Attendance Record

If you have questions about your student's attendance record, call the attendance office at 799-1450 ext. 4035.

Truancy

- * Truancy is defined as an absence without a valid excuse.
- * Parents notified in writing on the 1st, 2nd, and 3rd truancy and subsequent habitual truanancies.
- * Nevada Revised Statutes do not distinguish between truancy resulting from the action of the student and that of the parent/guardian.
- * A student who has been declared truant three or more times within one school year can be declared by the school to be an habitual truant and must be referred by the school to law enforcement for issuance of a misdemeanor citation. CCSD police will issue these citations.

The court imposed fines for truancy include the following:

- * \$100 fine for the first offense;
- * \$200 fine for the second offense (subsequent truancy);
- * 30 day suspension of a driver's license or ability to apply for a first license;
- * 60 day suspension of a driver's license or ability to apply for a license for second offense;
- * Up to 10 hours of community service;
- * Anyone charged and found guilty of aiding and abetting truancy is guilty of a misdemeanor (punishable by up to six months in jail and/or a \$1000 fine); and/or
- * Fines imposed by Juvenile Court Services after CCSD police issue the misdemeanor citation cannot be appealed through the school.

Make-up Work

- * You will be held accountable for all work. After any absence, you must contact the teacher(s) to obtain make-up work within **three (3) school days** immediately following the absence. Check your class website for homework if applicable.
- * Read course expectations for an individual teacher’s make-up procedures.

If I Want to Request Homework

- * If you will be out of school more than **three (3) days**, you may request homework.
- * Parents should call 799-1450 and ask for the health office, ext. 4020.
- * We need 24 hours notice to gather the homework from your teachers.

Tardiness

- *You must be inside the classroom when the tardy bell rings. **The tardy policy will be enforced** every day and every period.
- *All tardies to class are considered unexcused unless the student has a written pass from a school official.
- * Late students will sign the teacher’s tardy sheet.
- * Students late 30 minutes or more to class will be marked absent for that period.

Consequences

- First Tardy – Verbal warning**
- Second Tardy – Verbal warning**
- Third Tardy – Verbal Warning**
- Fourth Tardy – Parent contact.**
- Fifth Tardy – Counselor referral**
- Sixth Tardy – Required parent conference**
- All subsequent tardiness – Progressive discipline will be followed**

*******Tardy counts will be reset at the semester*******

STUDENT BEHAVIOR AND DISCIPLINE

For a more detailed explanation of behavior and discipline see the Behavior Guidelines for Secondary Students’ booklet.

WHEN DO SCHOOL RULES APPLY?
<ol style="list-style-type: none"> 1. Anytime on the school grounds at Palo Verde. 2. Anytime on another school’s grounds. 3. At a school activity. 4. On the way to or from school or a school activity. 5. On the school bus or at school bus stop.

Expulsion Offenses

Expulsion shall mean the termination of enrollment as the result of behavior so serious that future attendance in the regular schools of the district is not contemplated.

1. Battery On A School Employee - Physical abuse directed at a school employee
2. Battery To A Student – Physical abuse to any student with significant Injury, where a clear imbalance of power has been established
3. Drug/Alcoholic Beverages- Use, possession and/or distribution of a controlled and/or illicit substance or any substance represented to be such.
4. Weapons - Possession, use, transmittal, or concealment of ANY operable or inoperable weapon.

* Weapons are defined as firearms, knives, explosives, inflammable materials, or any other items that may cause bodily injury or death. BB and pellet guns, pocket knives, and fireworks are weapons. For a complete list, please see CCSD regulation 5141.

Simulated Weapons

- * You may not carry, use, possess, conceal, or transmit a simulated weapon on school district property unless you have received written permission from the school principal, or the principal's designee, to carry or possess such a simulated weapon.
- * Simulated weapons include, but are not limited to, any "toy" or nonfunctional implement which bears a substantial visual resemblance to any item defined by the CCSD regulations as a weapon.

If you are a habitual discipline problem you will be subject to expulsion for a minimum of one semester.

If in one school year you have:

- A. a record of five (5) suspensions from school for any reason

Inappropriate Behaviors

Inappropriate behaviors have consequences including Dean's Referral, Required Parent Conference, Suspension, Peterson Behavior Program, CCSD Drug Treatment Program, and Expulsion. Refer to the Behavior Guidelines for Secondary Students booklet for inappropriate behaviors. In addition, refer to Regulation 5141.1 for unacceptable behaviors.

Safe and Respectful Learning Environment

• Regulation 5137

• Bullying and Cyberbullying

- The Clark County School District is committed to providing a safe, secure, and respectful learning environment for all students and employee in all District facilities, school buildings, school buses, on school grounds, and at school-sponsored activities. Bullying, cyberbullying, harassment, and intimidation have a harmful social, physical, psychological, and academic impact on victims, bystanders, and even the bullies themselves. The school district strives to consistently and vigorously address bullying, cyberbullying, harassment, and intimidation so that there is no disruption to the learning environment and learning process.

• Requirements and Methods for Reporting Violations of NRS 388.135

- The Clark County School District shall assure that any person who believes that he or she has been a victim/target of bullying, cyberbullying, harassment, and/or intimidation as defined by NRS 388.122, 388.123, 388.124, 388.125 and/or 388.129 by any or all individuals as specified by NRS 388.135 be encouraged and instructed to adhere to the following reporting mechanism:

- Students: It is the policy of the Clark County School District to encourage students who are victims/targets of bullying, cyberbullying, harassment, and/or intimidation and students who have first-hand knowledge of such bullying, cyberbullying, harassment, and/or intimidation to report such claims. Students should report any incident(s) to a parent, teacher, counselor, or a school administrator. Incidents can be reported online at CCSD.net/students/bully. (Reference 5141.2 regarding Discipline: Harassment)

Portable Communication Devices, Tape Players, Radios, Video Recorders, Cameras

CCSD Policy 5136 prohibits the use of cell phones **during instructional time**. Cell phones are to be turned off, put away during class periods.

School staff will **confiscate** these items. **The school will not be held responsible if items are lost or stolen.**

Nuisance Items

What is a nuisance item? Any item that is a nuisance to classroom instruction and unrelated to school goals. Electronics at school are nuisance items: CD players, IPODS, pocket games, **cell phones, headphones/earphones**, etc.

Nuisance items will be:

- confiscated and tagged by **staff**.
- turned over to the dean's office, recorded and locked up.

Refusal to turn over a nuisance item will result in a referral to the deans' office for insubordination. The students will be placed on Required Parent Conference.

Vandalism

Palo Verde will not tolerate vandalism, destruction or defacement of property.

- You will pay for the damage;
- You may be arrested;
- You may be referred to an alternative behavioral program **or for expulsion.**

Hands-off

Palo Verde High School maintains a “hands-off” policy. You are required to keep your hands to yourself. This rule applies to horseplay as well as to overt displays of affection.

Security

Any potential campus disruption that would be considered a threat to the students or staff of Palo Verde High School, should be immediately reported to an administrator or school police.

Required Parent Conference/Temporary Removal from School

A notice of Required Parent Conference (RPC) is used by deans, assistant principals, and principals when a student-parent conference is required. The parent is to schedule the conference as soon as possible to avoid any loss of school time. If a parent is non-responsive, or if the parent refuses to attend a conference, a letter is sent from the deans’ office stating that unexcused absences will be recorded after two days and that the student is still not able to return to school without a student-parent conference.

AB 521 Referrals

AB 521 is available if, in the judgment of the teacher, and after the school’s progressive discipline plan has been followed and documented, a student engages in behavior that seriously interferes with the ability of the teacher to teach and the ability of other students to learn. Consequences include assigning the student to another appropriate class, assigning the pupil to an alternative program of education if available, recommending suspension or expulsion, and/or any other appropriate disciplinary action against the pupil that the placement review committee deems necessary.

School Dress

Any type of dress or appearance which results in disruption of the normal school routine may be designated as unacceptable by the school administration. The following guidelines are in accordance with the Clark County School District Regulation #5131. **Any changes made by the CCSD Board of Trustees will supersede the rules listed below.**

1. Require the wearing of shoes with soles. House slippers and shoes with wheels are not permitted.
2. All clothing must be sufficient to conceal any and all undergarments. No skin will show between bottom of shirt/blouse and top of pants or skirts at any time. All sleeveless shirts must have straps at least three inches wide. Prohibited tops include, but are not limited to, crop tops, tank tops, strapless, low-cut clothing, clothing with slits, or tops and outfits that provide minimum coverage.
3. Require that all shorts, skorts, skirts, and jumpers/dresses must be at least fingertip length.

4. All jeans, pants, and trousers must be secured at waist level. Sagging is prohibited. Jeans, pants, and trousers are not to have tears that expose under garments and/or are located mid-thigh or higher.
5. Headgear (hats, hoods, caps, bandanas, grooming aids, etc.) is not permitted on campus except for school approved uniforms, special events, authorized athletic practices, documented medical conditions, bona fide religious reasons, or CCSD sanctioned activities.
6. Slogans or advertising on clothing, jewelry, buttons, and/or accessories which are controversial, discriminatory, profane, or obscene in nature disrupt the educational setting and are prohibited.
7. Any clothing, jewelry, buttons, and/or accessories that promote illegal or violent conduct, or affiliation with groups that promote illegal or violent conduct such as, but not limited to, the unlawful use of weapons, drugs, alcohol, tobacco, or drug paraphernalia, or clothing that contains threats are prohibited.
8. Spiked or studded clothing, jewelry, and/or accessories are prohibited.
9. Outerwear such as coats, mittens, and scarves must be removed upon entering the classrooms/buildings. Administrators, teachers, R-5131 (page 3) and staff may use their discretion as appropriate based on the temperature in the facility.
10. The Basic Dress Code provisions [Section IV(A)(1-9)], and if adopted by the school, Standard Student Attire provisions [Section V(D)], shall be included in the student/parent notifications.

The school administration will have the right to designate which type of dress, fashion, fads, or appearance disrupt or detract from the educational program and may be a potential safety hazard.

1. Transparent **or backless** tops are prohibited.
2. Hair color and style must not be disruptive to the educational environment.
3. Slogans or advertising on clothing, and/or fashion trends deemed gang related, are prohibited. **For example: area codes and/or symbols and numbers deemed gang related. Contact the dean's office for clarification.**
4. Shirts must be worn under zip-up jackets.

Students in violation of the dress code will be sent home to change clothes, given clothing, or placed in 'in-house suspension' for the rest of the day. Students who violate the dress code will be subject to discipline in the Deans' Office. Progressive discipline will follow for students who repeatedly violate CCSD dress code.

Closed Campus

Palo Verde is a closed campus. Once you arrive on campus, you are to go directly into the building. There is to be no loitering in the parking lot at any time during the school day. You are not permitted to leave campus for breaks, or to be in any area other than the quads or the cafeteria. You are required to remain on campus until the end of the school day. If it is necessary to leave campus, you are to leave through the attendance office on a passport. Seniors must leave campus after their last class.

Student Searches

Students are hereby informed that they will be subject to search when they enter campus after the beginning of the day. This includes, but is not limited to, unauthorized returns. This notice does not exclude personnel, however, from searching a student at any time should there be reasonable suspicion of wrongdoing.

Where is your Pass?

Corridor passes are located in the front section of the student handbook. You need a corridor pass to go from class to almost anywhere. You especially need a pass to go to the nurse's office. If you are very sick, you may leave the classroom and go to the nurse's office without one (and save us the cleanup). Hall wanderers without passes will be escorted back to class or to the deans' office.

Infinite Campus

The Infinite Campus (I.C.) on-line system provides parents with detailed, real-time information, including: Demographics, Schedules, Assignments, Assessment Scores, Calendar, Grades, Attendance, Graduation Progress, Academic Planner, To Do Lists, Reports, District and School Notices. Students and parents that need assistance setting up their I.C. account should contact the Activities Office. Additional information regarding I. C. is available at www.ccsd.net.

Lockers

You will have the use of a book locker.

- No unauthorized sharing or switching of lockers is permitted.
- Food and valuables are not to be placed in lockers as the school assumes no responsibility for the loss of items from lockers.
- Lockers are to be kept neat and free of graffiti.
- Stickers are not to be placed on lockers. Padlocks are not to be placed on lockers; they will be cut off.

School lockers are the property of the Clark County School District, and the school authorities have the right to examine the contents of those lockers without notice for reasons of health, safety, and security. You are encouraged to limit access to lockers during the school day.

School Bank

The Palo Verde High School bank is located in the front office in room 122. The bank is open for student business 20 minutes before school and during breaks. The banker takes care of all school fees, fines, and student funds. All lost textbooks must be paid for at the school bank.

Withdrawals and Transfers

If you are moving or transferring to another school, you need to have your parents come into the registrar's office. The registrar will give you a withdrawal form. Each teacher, the librarian, the banker, and the health aide must sign the form before you return it to the registrar. All property of the CCSD must be returned at this time.

Commencement Ceremony

Participation in the commencement ceremony is a privilege for graduating seniors. Infractions of school regulations may result in loss of the privilege to participate in the commencement ceremony. School regulations must be obeyed at the place of commencements.

Health Office

You may, with parent/guardian permission, self-medicate at school. Upon request you must be able to provide written permission. All medication must be properly labeled with your name, prescribing practitioner, and instructions for administration. You will not be monitored by the health aide or school nurse. If you require assistance with your medication, you must have a signed and witnessed medication release on file, and medication must be prescribed by an appropriate health care provider. This applies to both prescription and over-the-counter medication.

Injuries

If you are injured while participating in any school activity, you should notify your instructor immediately. The teacher will send you to the health office or call the health aide. The health aide will render any first aid necessary to meet the immediate emergency. After this has been done, the health aide will contact your parents in regard to further medical treatment. The school is not liable for doctor and hospital bills resulting from an accident of any kind. In all cases where you are covered by accident insurance, you or your parent should obtain the necessary claim forms from the insurance company. Failure to do so may void the insurance. The school is not liable for medical bills.

Shelter-In-Place Drills

NRS 392.450 Section 2 requires three shelter-in-place drills during the school year to instruct pupils on appropriate procedures to be taken in the event of a chemical release incident or other emergency when evacuation is not appropriate. If you are outside, report immediately to the nearest classroom, library, or main office. If shelter-in-place is necessary at break time, you are to enter the office or library, sit on the floor, be quiet, and listen for directions.

Student Parking

Student parking will be available through the Mrs. Crosby's office. Students may park in the student parking lot located on the north side of the campus. Any student who drives a car to school MUST register the vehicle with the assistant principal. You will be issued a parking permit sticker. Students will park in any available space in the area designated as "Student Parking." Students will not be allowed to go to their cars during the regular school day. Students are NOT allowed to park in the faculty parking lot.

Bus Transportation

Bus service is provided for students who live two or more miles away from the school. If you are unsure of which bus to ride, see the deans' secretary. Students who do not cooperate with drivers will be denied the privilege of riding the bus.

Assemblies

Assemblies are scheduled throughout the school year. A special bell will be in effect on assembly days, and assemblies will be held during the last part of the day. No student will be allowed admittance into the assembly once it has begun, and no student will be allowed to leave before the assembly has concluded. Appropriate student behavior is expected at all assemblies. Attendance at most assemblies is optional. Students must leave campus if not attending the assembly.

Dances

Dances are sponsored by student council and other groups in the school. All Palo Verde students are welcome to attend dances unless they are on a Required Parent Conference (RPC) or suspension. School rules are enforced at all dances – whether they are held on or off campus. No one will be admitted to dances during the last hour of the dance.

Valuables

Student valuables or large amounts of money are not to be brought to school. The school assumes no responsibility for the loss, damage or theft of such valuables.

Visitors

Parents are always welcome at Palo Verde. They should check in at the principal's office

COUNSELING AND GUIDANCE SERVICES

The Guidance and Counseling Program consists of personal/social development, educational counseling, career counseling, classroom guidance activities, consultation with parents and teachers, individual counseling, group counseling, crisis intervention, and referrals to community agencies.

Counselors' Web Site: www.paloverde.org

Excellent information can be found here regarding ACT/SAT testing, post-secondary education, careers, counseling, etc. The materials can be accessed by going to the above site, then clicking on resources, then College Info Links or Career Links or Counseling

How Do I See a Counselor?

If you need to see a counselor, go to the secretary in the counselors' office, and fill out a request form. You will be called out of class later. You can reach your counselor by calling 799-1450 ext. 4300.

SAT

Test dates can be found at the SAT website: <http://www.collegeboard.com>

ACT Assessment

Test dates can be found at the ACT website: <http://www.act.org>

Drug Free Schools and Communities Act

"If a student needs help with drugs or alcohol problems, he/she should contact a teacher, school nurse, or principal." The school counseling office offers several programs for students that have problems with drugs or alcohol. The library, counselor's office, and health office offer pamphlets and information on available services for students concerned about drugs or alcohol.

Using the Library

The library is open before school, during breaks, and after school. During class periods, students must have a library pass. During breaks, you are welcome in the library, but at times you must yield to classes. The primary rule in the library during classes is to be there for a purpose, which may be reading, working on an assignment, or research. If you are not working, not respecting the rights and property of others, or failing to follow instructions you will be sent back to the classroom. You are responsible for the books you check out. There is a fine system for overdue books. If you have an overdue book you will not be allowed to check out new items until books are returned and fines are paid. Book losses and damage are user responsibilities.

PVHS Web Page

The address to the schools web site is <http://www.paloverde.org>

The school's web site has the following:

- * Academic calendars as well as sports calendars.
- * Parent Newsletter
- * Link to Official PVHS Twitter Page: @PaloVerdeHS_NV
- * Links to important college sites.
- * Links to subject matter web sites for each department.
- * Club information.
- * Maps of the school.
- * Senior and graduation information.
- * Athletic Packet. (must be picked up and paid for in the athletic office, \$25)

Parent Link

The ParentLink system is utilized to send phone calls and emails to parents regarding school information and events. ParentLink interfaces with Infinite Campus to send these messages. Students and parents no longer have individual ParentLink accounts.

Responsible Computer Use

As a student of Palo Verde, you must agree to follow the rules as listed in the Palo Verde Responsible Use Policy in alignment with the Clark County School District Acceptable Use Policy.

Athletics

Athletics and cheer participation are a privilege. Student-Athletes must adhere to guidelines established by Palo Verde High School, the Clark County School District and the Nevada Interscholastic Athletic Association. Athletes and cheerleaders will risk their eligibility for the use or possession of drugs or alcohol. Students must have a legitimate residence in the Palo Verde zone to participate and be able to prove their residency. Students on residential affidavits are ineligible for athletic participation. Students MUST be medically insured to participate in any sport. Any student/athlete who is arrested at any time and waiting court action will not be allowed to participate on any team until the alleged violation is resolved in the court system. Student athletes must have a 2.0 GPA to participate and have successfully passed two credit hours in the previous semester.

Students must have a completed and approved athletic packet in order to tryout. Athletic packets can be picked up in the athletic office. Return the completed athletic packet into the athletic office. Do not give athletic packets to your teachers. Only turn **COMPLETE PACKETS** into the athletic office or to the coach. There is a twenty five (\$25) dollar packet fee payable upfront.

Follow the latest game results on Twitter @Pvhs_pride

Fall Sports

Football, Men's and Women's Cross Country, Women's Golf, Men's and Women's Tennis, Women's Volleyball, Men's & Women's Soccer –

******Fall tryouts are tentatively set for August 16, 2016.******

****** Varsity football only, first day of practice is August 8, 2016******

Winter Sports

Men's and Women's Basketball, Wrestling, Men's and Women's Bowling, Girls' Flag Football –

*******Tryouts are tentatively set for November 6, 2016*******

Spring Sports

Baseball, Softball, Men's and Women's Track, Men's Volleyball, Men's and Women's Swimming, Men's Golf

*****Tryouts are tentatively set for February 28, 2016.*****

Cheerleading

Tryouts for the following school year squads are tentatively set **for Friday, March 12, 2017**. Tryout packets should be obtained through the cheer advisor. You must be a zoned student or have an approved zone variance to try out for cheer.

Athletics/Activities Appeal Procedure

Step 1: The athletics/activities administrator will conduct an investigation to determine the facts of the allegation. This investigation may include a conference in which both sides have the right to present their viewpoint.

Step 2: At the conclusion of the investigation, involved parties will be informed of the decision rendered and the right to appeal.

Step 3: If either of the parties chooses to appeal the decision, the next level of appeal is with the principal of the school and the appeal must be presented in writing.

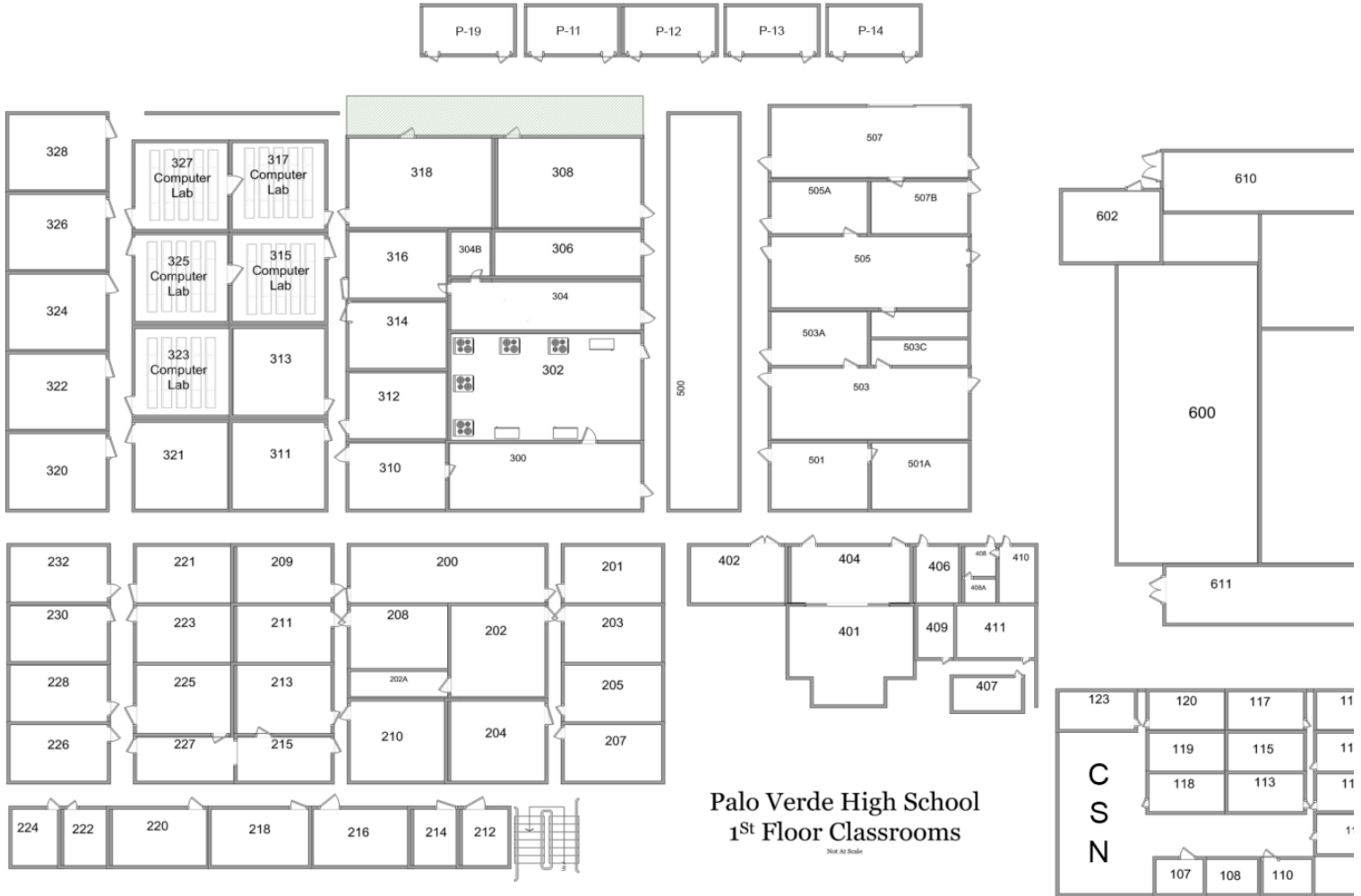
Game & Admission Policy

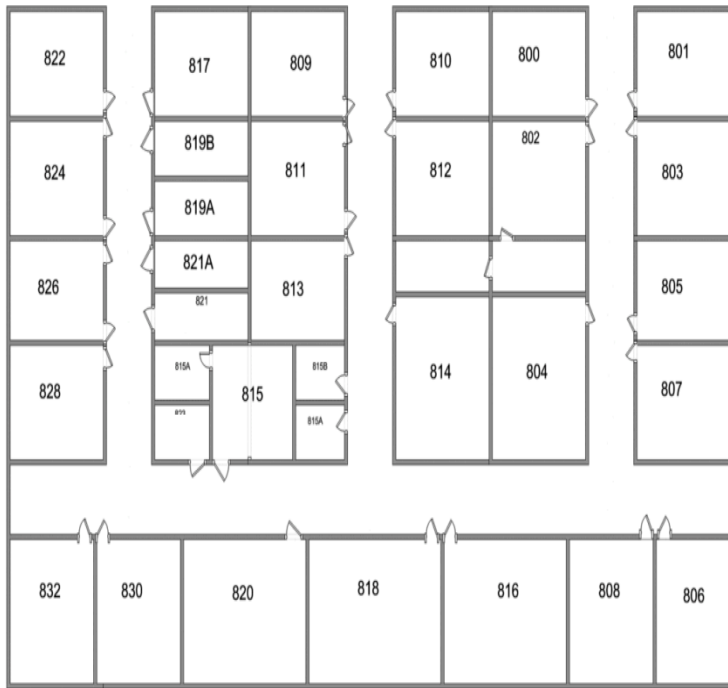
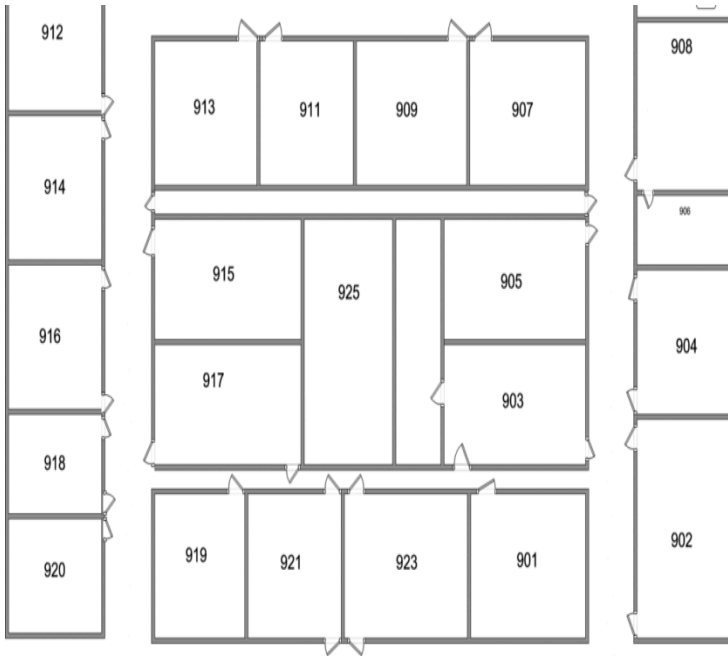
Football, basketball, volleyball, and wrestling games/matches have admission prices. Other sports have special tournaments and admission may be charged. We sell family passes for Fall, and Winter/Spring seasons. Ticket prices are set by the NIAA and not by the school. All schools have the same prices; \$3.00 students and \$5.00 adults. Playoff ticket are \$5 for students, \$3.00 for senior citizens and \$10 for adults.

Please do not bring food or beverages into the gym or into the football stadium for any of the sporting events. When you come to any sporting event at Palo Verde High School, expect to be asked to have your purse, back pack, etc. opened so it can be checked by school police. To make your entry go more quickly, please do not bring these items to games, air horns, noise makers, weapons, or pets. Please place your cell phone and keys on the table during police wandering.

Any fans that do not abide by the Clark County School District regulations regarding sportsmanship and citizenship will be asked to leave by either an administrator or school police. You will not be reimbursed the price of admission. There is **no smoking** allowed on campus. There is no re-entry if you leave an event!

NO WEAPONS OF ANY KIND, NO PETS, NO AIR HORNS, NO NOISE MAKERS





Palo Verde High School
2nd Floor Classrooms

Not At Scale

